

Haier

User Manual

HW75-BD12756NZP
HW80-BD12756NZP



Thanks for purchasing a Haier Product

Please read these instructions carefully before using this appliance. The instructions contain important information which will help you get the best out of the appliance and ensure safe and proper installation, use and maintenance.

Keep this manual in a convenient place so you can always refer to it for the safe and proper use of the appliance.

If you sell the appliance, give it away, or leave it behind when you move house, make sure you also pass on this manual so that the new owner can become familiar with the appliance and safety warnings.

Accessories

Check the accessories and literature in accordance with this list:

1x User Manual



1x Drain hose bracket



1x Bottom Plate



5x Blanking Plugs



1x Warranty Card



1x Inlet hose assembly



Cautions	3
Before Use	5
Functions	8
Maintenance	16
Trouble-Shooting	19
Technical data	20

Legend



Yes



No



Optional



Caution



Attention



Disposal

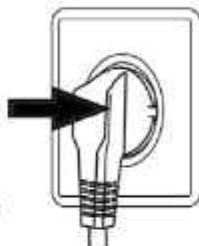
Help protect the environment and human health. Put the packaging in applicable containers to recycle it. Help to recycle waste of electrical and electronic appliances. Do not dispose appliances marked with this symbol with the household waste. Return the product to your local recycling facility or contact your municipal office.

Before switching the appliance on for the first time

This appliance can be used by children aged from 8 years and above and persons with reduced physical, sensory or mental capabilities or lack of experience and knowledge if they have been given supervision or instruction concerning use of the appliance in a safe way and understand the hazards involved. Children shall not play with the appliance. Cleaning and user maintenance shall not be made by children without supervision. Children of less than 3 years should be kept away unless continuously supervised.

Do...

- ✓ Make sure the transport bolt is removed before use.
- ✓ Use a separate earthed socket for the power supply.
- ✓ Make sure that the plug is accessible.
- ✓ Hold the plug and not the electric cable when unplugging the power supply.
- ✓ Make sure that the fuses in the power circuit are rated for 15A.
- ✓ Keep it away from heat sources and direct sunlight to prevent plastic and rubber components from aging.
- ✓ Make sure that the power cable is not caught under or in the appliance and avoid damage to the power cable.
- ✓ Check that hose joints and connections are firm and with no water leaking. If joints are not firm there will be leakage, turn off the water supply and refix it. Do not use the washing machine until the hoses are totally fixed.



Do not...

- ✗ Touch or use the appliance when barefoot or with wet or damp hands or feet.
- ✗ Use flammable detergent or dry cleaning agent.
- ✗ Use any flammable sprays in close vicinity to the appliance.
- ✗ Remove or insert the plug in presence of flammable gas.
- ✗ Allow children or infirm persons to play with the appliance or packing materials.
- ✗ Install the appliance outdoors in a damp place, or in an area which may be prone to water leaks such as under or near a sink unit. In the event of a water leak allow the machine to dry naturally.
- ✗ Place the washing machine directly on a carpet, or close to a wall or furniture.

During daily use of the appliance

Do...

- ✓ Pull up zips and fix loose threads to prevent the items from being entangled. If necessary, put small items into a small bag or net.

Cautions

- ✓ Turn off the machine after each wash program and switch it off at the mains to save electricity, and for safety. Wipe clean the lower part of the porthole.
- ✓ Keep the door slightly open when the washing machine is not in use to prevent formation of odours.
- ✓ Let the power cord be replaced by the manufacturer, his service agent or other accordingly qualified people, in case it is damaged.

Do not...

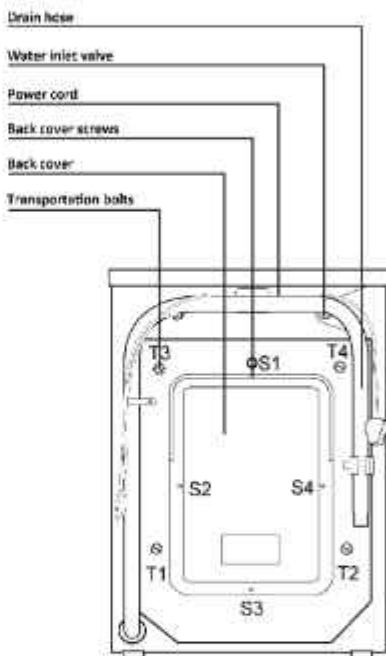
- ✗ Touch the washer door during the washing process, it gets hot.
- ✗ Place heavy objects or sources of heat or damp on top of the appliance.
- ✗ Hot wash foam rubber or sponge-like materials.
- ✗ Open the detergent distribution drawer during the wash cycle.
- ✗ Force the washer door to open, the door is fitted with a self-lock device and will open shortly after the washing procedure is ended.
- ✗ Open the washer door if the water level is visibly over the porthole.
- ✗ Cover the washing machine with a plastic cover so that the washing machine can dry out when not in use.

Saving Tips

- ① Achieve the best use of energy, water, detergent and time by using the recommended maximum load size.
- ① Do not exceed the detergent dosages indicated in the manufacturer's instructions.
- ① Save energy and time by selecting a high spin speed to reduce the water content in laundry before using a tumble dryer.
- ① Choose the correct washing temperature. Modern detergents can wash with very good result already in lower temperature than 60°C. Only use higher temperature than 60°C for very dirty laundry.

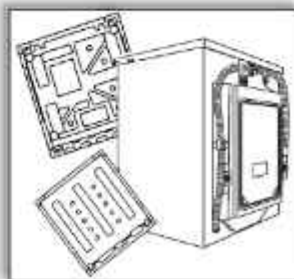
Description

This diagram may be slightly different from the layout of the washing machine you have just purchased.



Preparing the machine

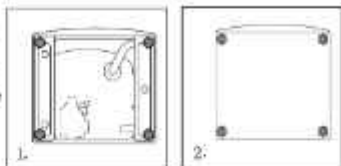
Remove all the packing materials to prevent unsteadiness, including the polystyrene base. Upon opening the package, water drops may be seen on the plastic bag and the porthole. This is normal phenomenon resulting from water tests in the factory.



Installation Warning. The washing machine is very heavy. Use safe lifting techniques when install the bottom plate.

When opening the package, you will find a bottom plate. It is used for preventing rats or foreign objects into the washing machine after covering the bottom of the cabinet.

1. Lay the machine on its back, then remove the 4 feet (figure 1.)
2. Put on the bottom plate, then install the feet which go into the four holes on the bottom plate (figure 2.). Finally lift the machine upright



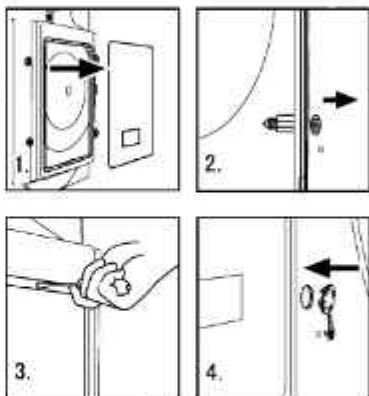
Dismantle the transportation bolts

The transportation bolts are designed for clamping anti-vibration components inside of the washing machine during the transportation process.

- ✓ Remove the back cover.
- ✓ Remove the four bolts on the rear side and take out the plastic stabilizers from within the machine.
- ✓ Refix the back cover.
- ✓ Fill the holes left by the bolts with blanking plugs.

Note:

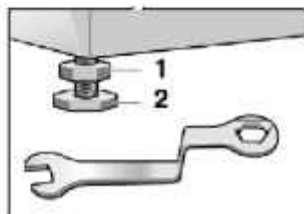
- ⚠ When you replace the back cover, the convex must face to outside, and you have to insert the back cover from the two gaps as shown in fig.5.
- ⚠ Keep the transportation bolts and plastic stabilizers in a safe place for later use.



Adjusting the feet

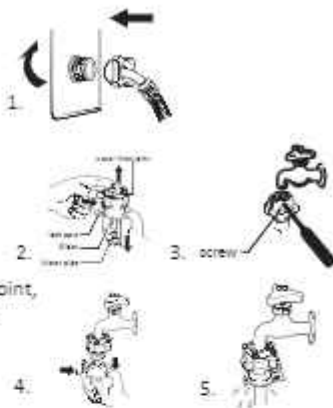
Adjust all feet to achieve a complete level position. This will minimize vibrations and noise during use. It will also reduce wear and tear. We recommend to use a spirit level for adjustment. Floor should be as stable and as possible.

1. Loose the locknut (1) by using a wrench.
2. Adjust the high by turning the foot (2).
3. Tighten locknut (1) against the housing.



Inlet Hose

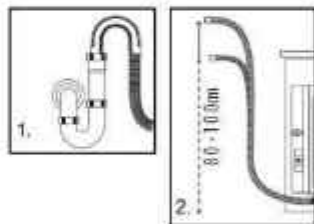
- ✓ Connect the nut on the inlet hose to the connector on the water valve (picture 1).
- ✓ a. Hold down the lower end of the lock pole, Then hold the inlet pipe, press on the slider, and remove the water inlet joint (picture 2).
- b. Loosen the four screws of the water inlet joint and fit the water inlet joint on the faucet. Make sure the screws is in place and tighten it (picture 3).
- c. Press the slider and insert the water pipe into the water inlet joint, hang the water inlet joint with a lock pole and release the slider until a "snap" is heard (picture 4 and 5).



- ⚠ Use the hose-set supplied with the appliance.
Old hose-sets should not be reused.

Drain Hose

- ✓ Use the drain hose bracket to keep the end of the drain hose retained and prevents the outflow of water. Don't extend the length of the drain hose; if an extended hose is required, please consult a serviceman or plumber.
- ✓ The height of the drainage outlet must be 80-100 cm. Fix the drain hose to the clip at the back of the washing machine to prevent it from dropping off.

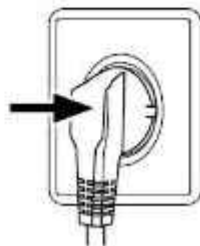


- ⚠ The drain hose should not be submerged in water and should be securely fixed and leak-free. If the drain hose is placed on the ground or if the pipe is at a height of less than 80cm, the washing machine will continuously drain while being filled (self-siphoning).

Connecting to Power Supply

Before connecting to the power supply, check:

- ✓ The socket is adequate for the maximum power of the washing machine (For safety, fuses in the power circuit should be rated for no less than 13A).
- ✓ The voltage should meet the requirement on the rating plate.
- ✓ The power outlet should be capable of accepting the washing machine plug.



Control Panel



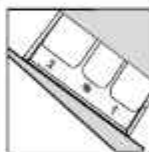
- | | | |
|------------------------------|---------------|-----------------|
| 1. Detergent/Softener Drawer | 6. Delay | 11. Water Level |
| 2. Power Button | 7. Spin Speed | 12. i-time |
| 3. Start/Pause Button | 8. Wash Temp | 13. LED Display |
| 4. Program Dial | 9. Wash | |
| 5. Night Wash | 10. Rinse | |

Basic status indication

- | | |
|--|--|
|  No water supply |  Door is locked(in operation) |
|  Control panel locked |  Door is open |

Operational Functions

Nº	Function	Explication
1	Detergent distribution drawer	Open the drawer, three compartments can be seen: Compartment 1: Water inlet only, no detergent Compartment 2: Liquid/Powder detergent Compartment 3: Softener, conditioning agent. The recommendation on the type of detergents is suitable for the various washing temperatures, please refer to the manual of detergent.
2	Power Button	Press this button to switch on the washing machine. Press it again to switch it off. Press this button gently for 2 seconds to switch off the machine as buttons are soft touch sensitive.
3	Start/Pause Button	When the washing machine is connected to the power socket and a program is selected, lightly touch this button to start operation. During a wash cycle, touch it lightly, operation will stop and the digits on the screen start blinking. Touch it again to resume operation. To cancel a wash program during a wash cycle, touch this button, when the digits on the screen start blinking, press the Power switch, the program will be cancelled.
4	Program Dial	By turning the knob clockwise/counterclockwise, the required program can be selected. There are 16 programs available. After a program is selected, the corresponding light will illuminate.
5	Night Wash	Select the "night wash" function key, the program is running to cancel the alarm in addition to all the beep. When the program shows END, do not enter the shutdown mode, the tube will enter the shaking process of low speed, the longest time is no more than 12 hours.



- | | | |
|----|--------------------|--|
| 6 | Delay | Touch this button lightly, the washing machine will start operation after a period of time and the corresponding indicator will go on. The range is 0.5-24 hours; each touch of this button increases a half hour. After the button is set, press the Start/Pause button to start countdown of the set time (the time is displayed on the screen until the program ends).

① The delay time must be longer than the program time otherwise the washing machine will start the wash program directly. |
| 7 | Spin Speed | Touch this button lightly to select the desired speed. When a speed is set, it will be displayed on the indicator. Note: If there is no indicator light displayed, this means no spinning.

① Different water temperatures and spinning speeds can be set for different laundries. Wash using the default settings if there is no special requirement. |
| 8 | Wash Temp | Touch this button lightly, the washing temperature will be displayed on the indicator. Select a temperature according to the type of laundry. Note: If there is no indicator light displayed, this means cold wash. |
| 9 | Wash | Touch the button to adapt time for Washing. in addition to the Quick mode for 3 minutes, the other for 5 minutes per step. |
| 10 | Rinse | Touch the rinse button to adapt times of rinse. |
| 11 | Water Level | Touch "water level" button to manually set the water level, according to the need to adjust the water, the higher the water level the more water. |
| 12 | i-time | Touch "i-time" button to manually select the washing time you want, for example you can increase the washing time if the clothing is very dirty, the system automatically adjusts the best parameter settings. |
| 13 | LED Display | Information as remaining wash time and error messages will be shown here.

① After a wash program is started the display will go on and the remaining wash time decreases. As the water pressure and temperature may differ, the remaining time may be adjusted accordingly. When the laundry is not balanced during spinning, the time may be automatically prolonged. |

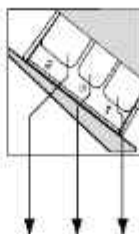
To cancel audible alarm

Alarm sound can be cancelled if it is required (not recommended)
Switch on the washing machine, then press the "i-time" and "Rinse" button, hold on for 3 seconds. The message "BEEP OFF" will be displayed on the screen, indicating that the alarm sound has been cancelled.

To reinstate audible alarm

Switch on the washing machine then press the "i-time" and "Rinse" button, hold on for 3 seconds. The "BEEP ON" message will be displayed on the screen, indicating that the alarm sound has been reinstated.

Program Modes



- 1 Water inlet only, no detergent
- 2 Liquid/Powder detergent
- 3 Compartment for softener

Mode A: HW75-BD12756N2P

Mode B: HW80-BD12756N2P

Programme	Max. load		Temp. Max	Preset	Preset			Fibre Type	Preset Spin Speed
	ModeA*	ModeB*			2	3	1		
1 Mix	7.5kg	8kg	60°C	30°C	✓	⊙	✗	Cotton /Synth	1000 rpm
2 Quick	1kg	1kg	40°C	---	✓	⊙	✗	Cotton	800 rpm
3 Wool	2kg	2kg	40°C	---	✓	⊙	✗	Woolen fabrics	800 rpm
4 Shirts	2kg	2kg	40°C	40°C	✓	⊙	✗	Cotton /Synth	1000 rpm
5 Duvet	2kg	2kg	40°C	40°C	✓	⊙	✗	Cotton	800 rpm
6 Allergy Care	3.5kg	4kg	60°C	30°C	✓	⊙	✗	Cotton /Synth	1000 rpm
7 Intense	7.5kg	8kg	90°C	30°C	✓	⊙	✗	Cotton /Synth	1200 rpm
8 Self Clean	0	0	90°C	90°C	✗	✗	✗	---	600 rpm
9 Delicate Care	1kg	1kg	40°C	30°C	✓	⊙	✗	Silk	800 rpm
10 Heavy	5kg	6kg	60°C	30°C	✓	⊙	✗	Cotton /Synth	1000 rpm
11 Under Wear	3.5kg	4kg	60°C	40°C	✓	⊙	✗	Underwear	1000 rpm
12 Kid's Wear	3.5kg	4kg	90°C	40°C	✓	⊙	✗	Cotton	1000 rpm
13 Casual	3.5kg	4kg	40°C	30°C	✓	⊙	✗	Cotton /Synth	1000 rpm
14 Hygienic	3.5kg	4kg	90°C	90°C	✓	⊙	✗	Cotton	1000 rpm
15 Spin	7.5kg	8kg	---	---	✗	✗	✗	---	1000 rpm
16 Rinse+Spin	3.5kg	4kg	---	---	✗	✗	✗	---	1000 rpm

Yes ✓

Optional ⊙

No ✗

Consumption Table

Program	Temp.	Model	Max. Load	Energy Consumption	Water Consumption	Wash Time	Spin Performance
Intense	60 °C	HW75-BD12758NZP	7.5kg	0.60kwh	48L	4.28h	55%
		HW80-BD12758NZP	8kg	0.67kwh	55L	3.28h	55%

- ① The standard 60 °C Intense program is suitable to clean normally dirty cotton laundry and this is the most efficient program in terms of combined energy and water consumptions for washing that type of cotton laundry; The actual water temperature may differ from the declared cycle temperature.

Energy Test Program Settings: 'Intense+80 °C +Max Speed+Wash 50min+Rinse 2'

Choose the best Detergent

	Universal	Color	Delicate	Special	Softener
Intense	L/P	L/P	-	-	O
Duvet	L/P	L/P	L	-	O
Mix	L/P	L/P	-	-	O
Wool	-	-	-	L	O
Underwear	L/P	L/P	-	-	O
Shirts	-	-	-	L	O
Casual	L/P	L/P	L	-	O
Hygienic	L/P	L/P	L	-	O
Quick	L	L	-	-	O
Heavy	L/P	L/P	L	-	O
Kid's Wear	L/P	L/P	-	-	O
Delicate Care	-	-	L	-	O
Allergy Care	-	-	-	L	O

	Detergent	Temperature range in °C
L	Liquid	cold - 60
P	Powder	40 - 90
O	Optional	---
-	No	---

If using liquid detergent, it is not recommended to activate the delayed start. The amount of detergent required please refer to the detergent packaging.

Info: Modern washing detergents work at low temperatures.

- ① In extremely low water pressure (<0.01Mpa), it is requested to insert the detergent powder into the drum directly. Don't put detergent powder into the drawer, otherwise, it will be solidified in the drawer.

Washing Methods

- ⚠** This washing machine is for domestic use only. If the machine is used for commercial purpose the guarantee will not be valid anymore. Do not use it for purposes other than that for which it was designed. Follow the instructions given on the label of each garment and wash only machine-washable garments.

Power Supply

Connect the washing machine to the power supply (220V to 240V~/50Hz).



Water Connection

Turn on the tap. The water must be clean and clear.

- ⓘ** Before use, check for leaks in the joints between the tap and the inlet hose by turning on the tap.



Preparing the Laundry

Sort out clothes according to fabric (cotton, synthetics, wool or silk) and to how dirty they are.

Separate white clothes from colored ones. Wash them first by hand to check if they fade or run.

Empty pockets (keys, coins, etc.) and remove the harder decorative objects (e.g. brooches).

- ⓘ** Attention: Small parts (like buttons, etc) may lead to repair work which user has to pay by him and can cause damage in the machine.

Garments without hems, underwear, and finely woven textile such as fine curtains are to be put into wash bag (it is better not to wash them in a washing machine).

Close zippers and hooks, make sure the buttons are sewn on tightly and place small items such as socks, belts, bras, etc. in the wash bag.

Unfold large pieces of fabric such as bed sheets, bedspreads, etc.

Turn shirts inside out.



Loading the appliance

Open the washer door put in the laundry piece by piece. Close the door tightly.

When first using the washing machine, let it run unloaded for one program with detergent, with 60°C to prevent the laundry from being tainted by oil or dirty water from the washing machine.

Do not overload the washing machine. (Check if you can put a hand upright on top of load)



Selecting Detergent

The washing efficiency and the performance is determined by the quality of detergent used. Special non-foaming detergent produces good washing results. Use specific detergents for synthetic and woollen goods. Do not use dry cleaning agents such as trichloroethylene and similar products.

- ⚠ Do not add more detergent than needed; otherwise, it may cause the situations as following and washing machine malfunction impacting washing machine's life.
 - ⚠ Due to the increasing foam, the rinse time will be longer than normal;
 - ⚠ The foam may overflow from the detergent drawer because of the increasing pressure of the foam;
 - ⚠ It may remain foam without cleaning out after the final spinning cycle.

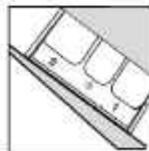
- 📌 Recommendation:
 - 🕒 Clean the detergent drawer Regularly.
 - 📖 Please follow the dosage recommendation on the powder or liquid detergent package.



Adding Detergent

Slide out the detergent drawer and put the required detergent and softening agent into the corresponding compartments. Push back the drawer gently. (Refer to the instructions on the drawer)

- ⚠ Use liquid detergent according to the instructions on its package. Do not use liquid detergent if the "Delay" is selected.
- ⚠ Do not overuse softener; otherwise, it will damage the artificial fibers.
- 🕒 In extremely low water pressure (<0.01Mpa), it is requested to insert the detergent powder into the drum directly.



Care Chart

Machine Wash COLD	Hand Wash	Tumble Dry/NO HEAT	Do Not Tumble Dry	Iron, Steam or Dry, with LOW HEAT
Machine Wash WARM	Do Not Wash	Tumble Dry/LOW HEAT	Line Dry	Iron, Steam or Dry, with MED/UM HEAT
Machine Wash HOT	Bleach as needed (any bleach, like Clorox® may be safely used)	Tumble Dry/MEDIUM	Drip Dry	Iron, Steam or Dry, with HIGH HEAT
Machine Wash COLD Permanent Press		Tumble Dry/HIGH	Dry Flat	Do Not Iron with Steam
Machine Wash WARM Permanent Press	Non-chlorine Bleach as needed (Use only a color-safe bleach, like Clorox®)	Tumble Dry/Permanent Press, NO HEAT	Don't dry clean	Do Not Iron
Machine Wash HOT Permanent Press		Tumble Dry/Permanent Press, LOW HEAT	Dry on clothes hanger	Dryclean May appear with additional letters and/or lines (ask this icon to a professional drycleaner)
Machine Wash COLD Gentle Cycle	Do Not Bleach (No bleach product should be used including 2-in-1s with bleach - or follow to each package test procedure to test for bleach safety)	Tumble Dry/Permanent Press, MEDIUM	Tumble dry, Medium heat	Do Not Decolor
Machine Wash WARM Gentle Cycle		Tumble Dry/Gentle Cycle, NO HEAT	Tumble dry, low heat	Dry cleaning with any solvent
Machine Wash HOT Gentle Cycle	Wool Mark	Tumble Dry, Gentle Cycle, LOW HEAT	Don't tumble dry	Dry cleaning with peroxide
		Tumble Dry/Gentle Cycle, MEDIUM		

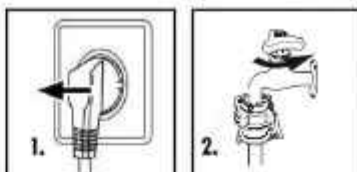
Load Reference

Material	Made of	Load in grams
Bed Sheet	Cotton	Approximately 800
Blanket	Wool	Approximately 3000
Blended fabric clothes	/	Approximately 800
Jackets	Cotton	Approximately 800
Jeans	/	Approximately 800
Overalls	Cotton	Approximately 950
Ladies Pyjamas	/	Approximately 200
Shirts	/	Approximately 300
Socks	Blended fabrics	Approximately 50
T-Shirts	Cotton	Approximately 300
Underwear	Blended fabrics	Approximately 70

Cleaning and Care

After washing

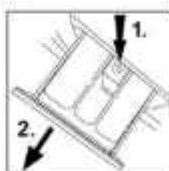
Turn off the water supply and remove the electrical plug after each wash. Open the washer door to prevent formation of moisture and odors. If the washing machine is left idle for a long period, drain the water in the machine and replace the drain hose.



Cleaning the detergent drawer

Take always care there are no detergent residues. Clean the drawer regularly :

1. Pull out the drawer until it stops.
2. Press the release button and remove the drawer.
3. Flush the drawer with water until it is clean and insert the drawer back in the appliance.



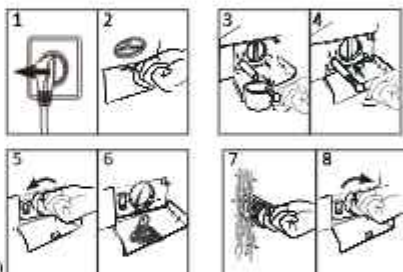
Cleaning the machine

Unplug the machine during cleaning and maintenance. Use a soft cloth dampened with soap liquid to clean the machine case and rubber components. Do not use organic chemicals or corrosive solvents.

Cleaning the filter

Clean the filter once a month:

1. Turn off and unplug the machine(Fig.1).
2. Open service flap. You can either use a coin or a screwdriver(Fig.2).
3. Provide a flat container to catch leach water(Fig.3). There could be bigger amounts!
4. Pull the drainhose out and hold its end above the container (Fig.3).
5. Take the sealing plug out of the drainhose (Fig.3).
6. After complete drainage close drainhose, and push it back into the machine(Fig.4).
7. Unscrew and remove counter clockwise the pump(Fig.5).
8. Remove contaminants and dirt (Fig.6).
9. Clean carefully pump filter, e.g. using running water(Fig.7).
10. Refix it thoroughly(Fig.8).
11. Close service flap.



⚠ The filter must be in place, or it may lead to leakage.

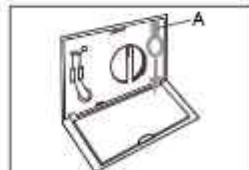
⚠ Place a container under the drain pump filter, to collect any excess water that may come out of the drain pump

In case of power failure

The current programme and its setting will be saved. When power supply is restored operation will be resumed.

If a power failure cuts an operating wash programme door opening is mechanically blocked. To get out any laundry water level should

not be seen in the glassy porthole of the door. - Danger of burns! Water level has to be lowered as described in " Pump filter ".Not till then pull lever beneath service flap until door is unlocked by a gentle click.Afterwards refix all parts.

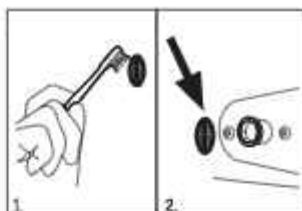


- Ⓛ Power-off memory function: In case of abrupt power failure or the need to cut off the power during a program cycle, the present settings will be saved and the preset operation will resume when the power is on again.

Water inlet valve and inlet valve filter

To prevent blockage of water supply by solid substances like lime clean regularly the inlet valve filter.

- ▶ Unplug the power cord and turn off the water supply.
- ▶ Unscrew the water inlet hose at the back (Fig.2).
- ▶ Remove the filters and flush them with water and a brush (Fig. 1).
- ▶ Insert the filter and install the inlet hose.



Moving the machine

If the machine is to be moved to a distant location, replace the transportation bolts removed before installation to prevent damage as shown below.

Remove the back cover.

Remove the blanking plugs.

Insert the plastic stabilizers and the transportation bolts.

Tighten the bolts with a spanner.

Replace the back cover.



Long periods of disuse

If the washing machine is left idle for a long period, pull out the electrical plug and turn off the water supply. Open the washer door to prevent formation of moisture and odors. Leave the door open while not used.

Information codes






Following codes are displayed only for information referring to the washing cycle.

Code	Message
t:25	The remaining wash cycle time will be 1 hour and 25 minutes.
5:30	The remaining wash cycle time including chosen end-time delay will be 6 hours and 30 minutes.
P-- 1/2/3	1/2/3 additional rinses are chosen (see FUNCTION BUTTONS „Extra rinse“).
End	The washing cycle is finished. The appliance shuts off automatically.
cLo 1-	Function child lock is activated.
Loc 1-	Door is closed because of high water level, high water temperature or spinning cycle.
bEEP OFF	The buzzer is deactivated.
bEEP ON	The buzzer is activated.
SPEED uP	Function "Sped up" is activated.

Troubleshooting with display code

Problem:	Cause	Solution
E1	Drainage error, water is not fully drained within 7 minutes (H4075-80+2756N2F) 8 minutes (H4080-80+2756N2F)	Clean pump filter. Check drain hose installation.
E2	Lock error.	Shut the door properly.
E4	Water level not reached after 30 minutes. Drain hose is self-siphoning.	Make sure that tap is fully opened and water pressure is normal. Check drain hose installation.

F7	Motor Error	Contact the maintenance personnel.
E8	Water exceeds protective level.	Contact the maintenance personnel.
FA	Water level sensor error.	Contact the maintenance personnel.
FC1	Abnormal communication error display board and motor.	Contact the maintenance personnel.
FC2	Abnormal communication error display board and power board	Contact the maintenance personnel.
End	End of wash cycle.	
19:30	Status information: Preset time for delayed operation.	
1:25	The remaining time is 1 hour 25 minutes.	
UNb	Washing machine has an unbalanced load protection function, When unbalanced weight is greater than allowable maximum, the washing machine will not spin and will run at a speed to avoid abnormal vibration and noise.	check and balance the laundry load in the drum. Also reduce the load if too heavy. Restart with a spin program.

-  **Control panel lock function:** Press the "Water Level" and the "i-time" buttons simultaneously for 3 seconds after starting a program. When the function be activated, icon  will be lit. It can no longer be changed by operating buttons or knobs. To unlock press the "Water Level" and "i-time" buttons again for 3 seconds.
-  **Power-off memory function:** In case of abrupt power failure or the need to cut off the power during a program cycle, the present settings will be saved and the preset operation will resume when the power is on again.
-  **To cancel a program.** Press the "Start/Pause" button, then switch off the power and the program is automatically cancelled. Turn the program selector again to choose another program.
-  **During the spin process, if too much foam is generated, in order to protect the motor, the washing machine will eliminate the foam automatically; the motor will stop and the drain pump will drain the water continuously for 90 seconds. If it happens more than 3 times, the motor will stop until the end of cycle without spinning.**

Trouble-Shooting

Problem	Causes	Solutions
Washing machine fails to operate.	<ul style="list-style-type: none"> ✗ Poor connection to the power supply. ✗ Power failure. ✗ The washer door is not properly closed. ✗ Machine has not been switched on. 	<ul style="list-style-type: none"> ✓ Check connection to the power supply. ✓ Check the power supply. ✓ Close the washer door properly. ✓ Make sure the machine is switched on.
Washing machine cannot be filled with water.	<ul style="list-style-type: none"> ✗ The "Start/Pause" button is not pressed. ✗ Water tap is not turned on. ✗ The inlet hose is kinked. ✗ Water supply failure. ✗ The program knob is not properly set. ✗ The washer door is not properly closed. ✗ The inlet hose filter is blocked. 	<ul style="list-style-type: none"> ✓ Press the "Start/Pause" button. ✓ Turn on the water tap. ✓ Check the inlet hose. ✓ Ensure the water supply. ✓ Set the program knob properly. ✓ Close the washer door properly. ✓ Unblock the inlet hose filter.
Machine is draining while being filled.	<ul style="list-style-type: none"> ✗ The height of the drain hose is below 80 cm. ✗ The drain hose is in water. 	<ul style="list-style-type: none"> ✓ Install drain hose with in 80-100 cm of height. ✓ Make sure the drain hose is not in water.
Drainage failure.	<ul style="list-style-type: none"> ✗ Drain hose is blocked. ✗ Drain hose end is higher than 100 cm above the floor level. ✗ The filter is blocked. 	<ul style="list-style-type: none"> ✓ Unblock the drain hose. ✓ Make sure the drain hose end is lower than 100 cm above floor level. ✓ Unblock the filter.
Strong vibration while spinning.	<ul style="list-style-type: none"> ✗ Not all transportation bolts have been removed. ✗ Washing machine is located on an uneven surface or is not level. ✗ Machine load lower (7.5kg (W75-BD), 7.5kg (W75) / 8.0kg (W80-BD), 7.5kg (W75)) 	<ul style="list-style-type: none"> ✓ Remove all transportation bolts. ✓ Make sure the washing machine is on an even surface and levelled. ✓ Adjust amount of laundry in the drum.
Operation stops before completing wash cycle.	<ul style="list-style-type: none"> ✗ Water or electricity failure. 	<ul style="list-style-type: none"> ✓ Check the power supply or water supply.
Operation stops for a period of time.	<ul style="list-style-type: none"> ✗ Washing machine gives an error message. ✗ Washing machine is in soaking cycle? 	<ul style="list-style-type: none"> ✓ Check display codes. ✓ Press the time hold button or the Start/pause button again to cancel it.
Excessive foam in the drum, which is spilled to the distribution drawer.	<ul style="list-style-type: none"> ✗ The detergent is not a low foaming type or for manual wash. ✗ Excessive use of detergent. 	<ul style="list-style-type: none"> ✓ Check if your detergent is appropriate. ✓ Reduce amount of detergent in the distribution drawer.
Automatic adjustment of the washing time.	<ul style="list-style-type: none"> ✗ The washing program duration will be adjusted. 	<ul style="list-style-type: none"> ✓ This is normal and doesn't affect the functionality.
Spinning fails	<ul style="list-style-type: none"> ✗ Unbalance of the laundry 	<ul style="list-style-type: none"> ✓ Add clothes or run a spinning program again.



In case of power failure

The current program and its setting will be saved. When power supply is restored, operation will be resumed. If a power failure cuts an operating wash program door opening is mechanically blocked. To get out any laundry, water level should not be seen in the glassy porthole of the door. And ensure that the machine temperature is below 55 °C and the inner drum is not running. Then pull lever (A) beneath service until door is unlocked by a gentle click afterwards reflex all parts.

Product Fiche (according EU 1061/2010)

	Haier	Haier
Trade mark		
Model No.	HW75-BD12756NZP*	HW80-BD12756NZP*
Rated capacity(kg)	7.5	8
Energy efficiency class	A+++ -30%	A+++ -30%
Energy consumption per year (kWh) ¹⁾	132	147
Energy consumption of Intense 60°C, full load (kWh/cycle)	0.60	0.67
Weighted power consumption of the off-mode(W)	0.48	0.48
Weighted power consumption of the left-on mode(W)	0.48	0.48
Water consumption per year (L) ²⁾	10560	12100
Spin-drying efficiency class ³⁾	B	B
Max spin speed (rpm) ⁴⁾	1200	1200
Remaining moisture content (%) ⁴⁾	56	55
standard 60°C Intense program ⁵⁾	Intense+60°C+Max.spin speed+Wash 50min+Resine 2)	
Program time of Intense 60°C, full load (min)	268	208
Duration of the left-on mode (min) ⁶⁾	-	-
Airborne acoustical noise (washing/spinning)(dB(A)) ⁷⁾	50/70	50/70
Type	freestanding	
1) Based on 220 standard washing cycles for Intense program at 60°C at full load. Actual energy consumption will depend on how the appliance is used.		
2) Based on 220 standard washing cycles for Intense program at 60°C at full load. Actual water consumption will depend on how the appliance is used.		
3) Class G is the least efficient and Class A is the most efficient.		
4) Based on the standard 60°C Intense program at full load.		
5) *standard 60°C Intense program is the standard washing program to which the information in the label and fiche relates. This program is suitable to clean normally soiled cotton laundry and this is the most efficient program in terms of combined energy and water consumption.		
6) In case there is a power management system.		
7) Based on the standard 60°C Intense program at full load.		

Basic technical information regarding the appliance.

	HW75-BD12756NZP*	HW80-BD12756NZP*
Power source	220-240 V~/50 Hz	220-240V~/50 Hz
Max. working current (A)	10	10
Water pressure (MPa)	0.001≤P≤1	0.001≤P≤1
Washing programs	16	16
Max power (W)	1850	1850
Dimensions (HxDxW mm)	850 x 460 x 595	850 x 550 x 595
Net weight (kg)	• 65	69

